

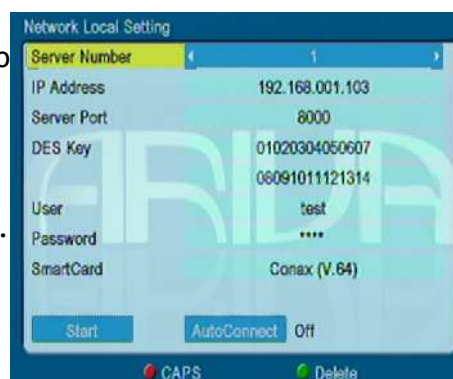
Card sharing over LAN on Ariva 100/200 by NewCamd

Solution support up to 4 client in LAN connection:



Server

1. Change MAC address, save, shutdown restart, and remember to plug-in card!
2. Set NewCamd Server and press red button to configure.
3. Set server port 8000 (recommended), user name and password. Default DES key is
01020304050607
08091011121314
4. Press the start button, open the server, button will become a stop (second press will shut down the server). Do not press stop, EXIT to main menu or other operations, such as watching television :)



Client

1. Change MAC address, save, shutdown restart!
2. Set NewCamd Client and press red button to configure.
3. Enter the server's IP and PING to check LAN connection first.
4. If success than enter port, user name, password, etc.
5. Login and through NewCamd agreement, you can watch TV



In the server side you will find "connect success" it illustrate the success of the client connections.